

# EXIT DASHBOARD

<b>Voluntary Term</b>			<b>Retirement Only</b>				<b>Involuntary Term</b>				<b>Total Exits</b>			
128			85				24				237			
Month	Jul-23	Aug-23	Sep-23	Oct-23	Nov-23	Dec-23	Jan-24	Feb-24	Mar-24	Apr-24	May-24	Jun-24	12 Month Totals	Avg Head count
Head Count	2012	2111	2123	2137	2143	2142.5	2136.5	2130.5	2131.5	2134.5	2129.5	2126	2121	
Exits	62	21	8	12	7	17	28	11	12	17	18	24	237	Exits

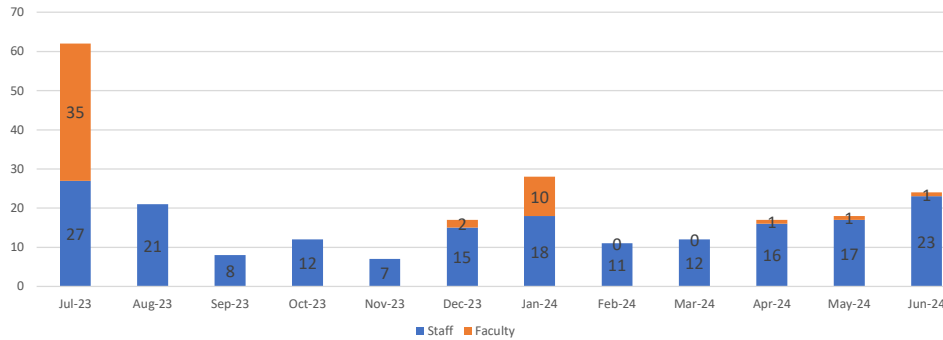
Target Goal: 90%

CUPA FT Avg. - 86.1%



**Retention: 88.8%**

12 Month Rolling Turnover



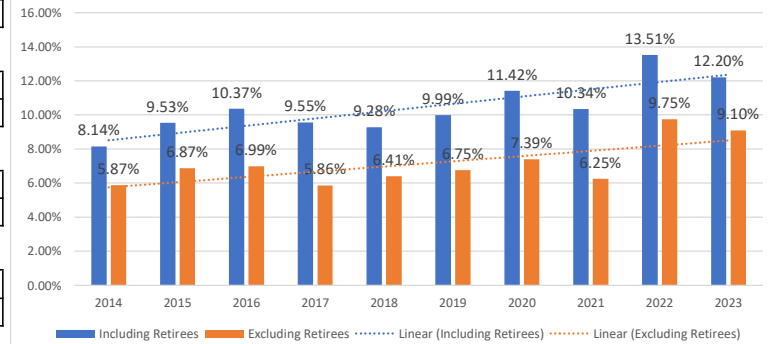
**Annual Turnover**  
11.2%

**Without Retirees**  
7.2%

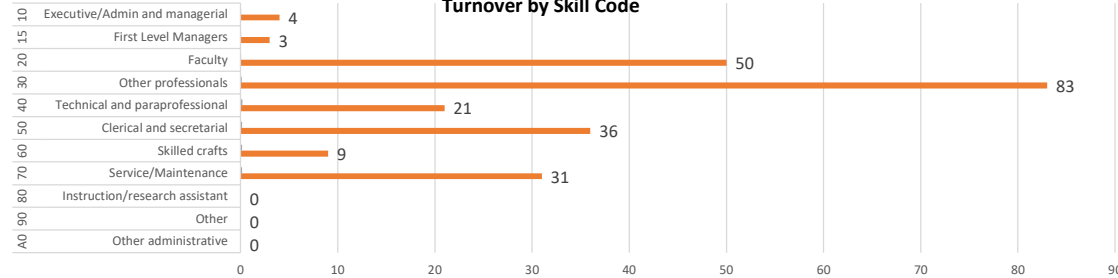
**Retirees Only**  
4.0%

**Est. Cost**  
\$1,540,500.00

10-Year Annual Fall Turnover (Oct-Sep)

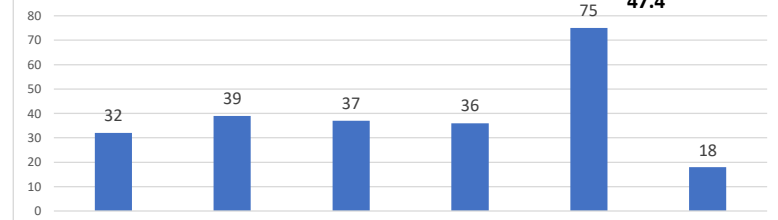


Turnover by Skill Code

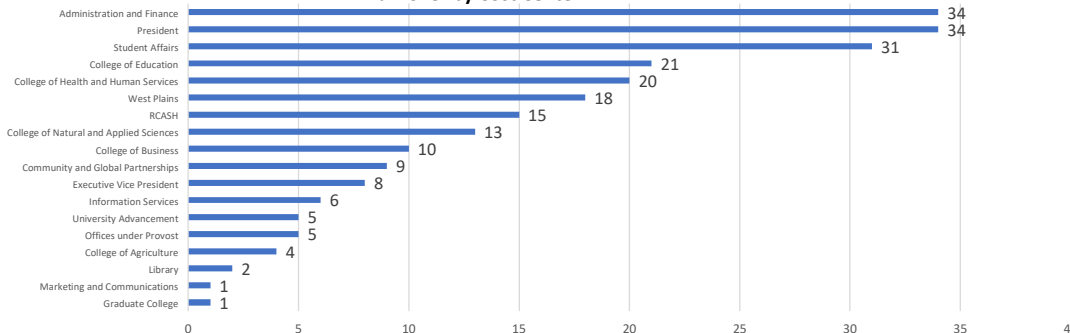


Turnover by Age

**Average Age**  
47.4



Turnover by Cost Center



Resignation Reason and Average Years of Service

\*This chart does not include involuntary terms or retiree data

